

2019

Fitzwilliam Academics Exam Preparation Courses

Fitzwilliam Academics provides effective Revision Courses for GCSE, IGCSE and A-level, away from the distractions of home.

We provide intensive, small-group tuition to boost confidence, optimise revision time and improve exam grades.





EXAM PREPARATION COURSES

Fitzwilliam Academics has partnered with Adcote School and Myddelton College to provide revision courses for GCSE, IGCSE and A-level during the school holidays. All courses will be held at one of these two locations.

Adcote School for Girls was founded in 1907 and sits in the heart of the Shropshire countryside. The house was designed by the famous architect Norman Shaw RA to a Tudor design and stands in 27 acres of landscaped gardens.

Myddelton College situated in Denbigh, North Wales, provides education for boys and girls aged 9 – 18. The campus covers 37 acres and in addition to the main Grade II listed block there are three boarding houses and the former principal's house.

Fitzwilliam Academics provides intensive, small-group tuition to boost confidence, optimise revision time and improve exam grades. Tuition is delivered by experienced teachers, chief examiners and Oxbridge graduates.

Our courses were designed by previous members of the Senior Management Teams at Cardiff Sixth Form College and Oxford International College, the UK's number 1 and number 2 ranked schools. We therefore have a proven track record in delivering some of the most effective academic programs in the world.



KEY INFORMATION

DATES

Easter	
Week 1	8th – 12th April
Week 2	15th – 19th April
Week 3	22nd – 26th April
Students can sign up to 1, 2 or 3 weeks at a time.	

May Half Term	
Week 1	27th – 31st May

Summer Holidays	
Week 1	8th – 12th July
Week 2	15th – 19th July
Week 3	22nd – 26th July
Week 4	29th July – 2nd August
Week 5	5th – 9th August
Week 6	12th – 16th August
Week 7	19th – 23rd August
Students can sign up to any number of weeks.	

Christmas Holidays	
Week 1	9th – 13th December
Week 2	16th – 20th December
Students can sign up to 1 or 2 weeks at a time.	

CURRICULUM

Over 15 key A-level, GCSE and IGCSE subjects. Choose a maximum of 3 subjects a week.

FEES

Non-residential £850/week (includes lunch).

Residential £1200/week (Full board).

HOW TO APPLY

To book your place or if you have any questions, please contact us at info@fitzwilliamacademics.com or call 0121 285 6600.

A PROVEN TRACK RECORD

Our courses have been designed by a combination of experienced teachers and professors from world-class universities. Our founding team have previously delivered academic programmes at some of UK's highest performing schools and sixth form centres, including Cardiff Sixth Form College and Oxford International College.

Cardiff Sixth Form College has been the UK's number 1 school in terms of A Level results for the last 8 years running, with results consistently above 90% A*-A. In 2016 the BBC made a documentary named 'Britain's Brainiest School' to celebrate the success of the college, which featured our course designers Kieran and Imran.

As a result of rapid improvement in academic performance, Oxford International College is now the UK's number 2 school in terms of A-level results with 83.5% A*-A grades, according to The Times newspaper. It is also the highest performing school in the UK in terms of A* grades (58.2%).

We know what it takes to enable students to consistently achieve their potential and we are willing to go above and beyond to ensure that every student makes as much progress as possible during their time with us.



THE TIMES The Daily Telegraph INDEPENDENT SCHOOLS

2017	School	No. of students	Percentage A* A
1	Cardiff Sixth Form College	157	91.8%
2	The Perse School	172	86.5%
3	Westminster School	90	86.4%
4	Kings College School	199	86.2%
5	Queen Ethelburga's College	108	84.95%

2016	School	No. of students	Percentage A* A
1	Cardiff Sixth Form College	133	93.37%
2	Westminster School	189	89.91%
3	Magdalen College School	175	87.85%
4	North London Collegiate School	116	87.44%
5	Queen Ethelburga's College	128	86.86%

2015	School	No. of students	Percentage A* A
1	Cardiff Sixth Form College	158	94.6%
2	Guildford High School for Girls	77	89.4%
3	Westminster School	194	88%
4	North London Collegiate School	118	86.7%
5	Wycombe Abbey School	85	84%



COURSE DESIGNERS & TUTORS



IMRAN FARZAL

Imran worked as Director of Studies and Staff at Cardiff Sixth Form College (CSFC) for 8 years, and is currently principal of the international department of Huanggang Middle School (GZ) and member of the board of Cambridge International Examinations (CIE).



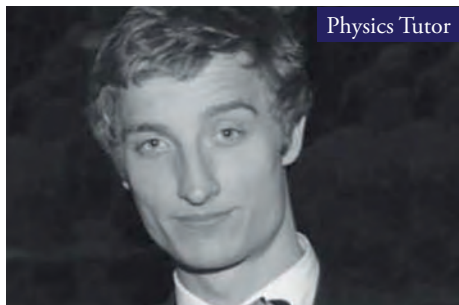
KIERAN HAMMOND

Cambridge graduate Kieran worked as Head of Careers at Cardiff Sixth Form College and Academic Director at Oxford International College. He is also CEO of Leading Education, a UK consultancy that helps students gain access to world-class universities.



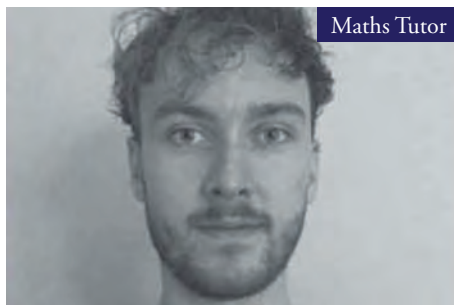
DR MATTHEW TRANTER

Matthew is a professor of Medicine at the University of Oxford, and a fully qualified, practising doctor. He holds a medical degree from Trinity College, Oxford and a PhD in cardiac pharmacology from Imperial College London.



PIOTR ZULAWSKI

Piotr graduated with a First Class Masters Degree in Astrophysics from Cambridge. He was awarded the Dr Stevenson Award for the best result of all science subjects across the College and came top of his year in the Cosmology exam.



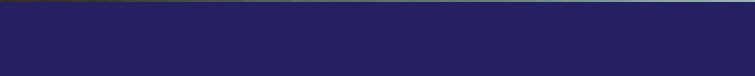
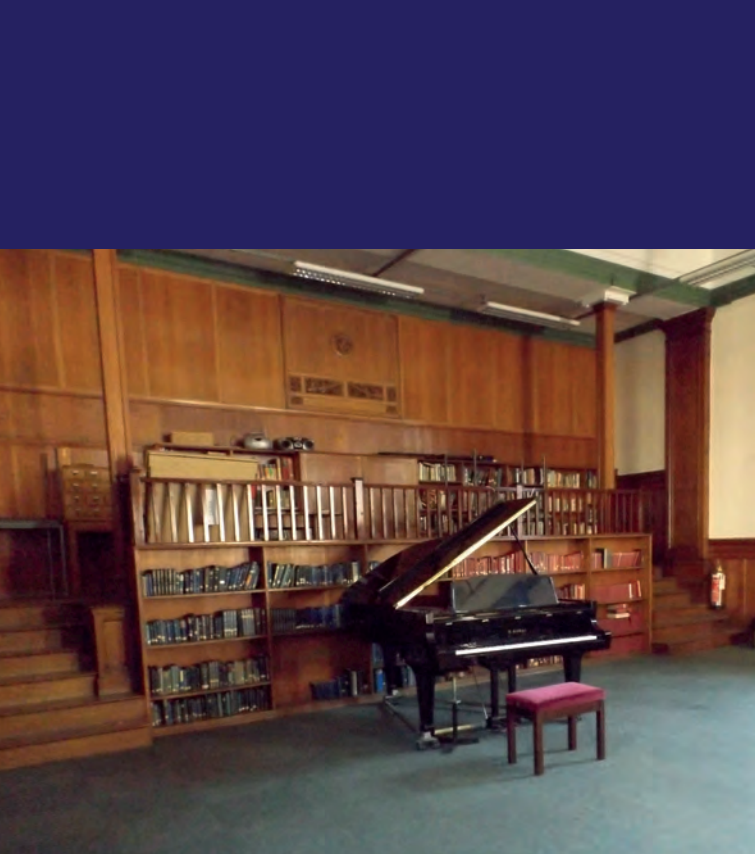
LIAM HAMMOND

Liam has a first-class degree in Mathematics from Cambridge, and has several years experience in teaching students in the international sector. He specialises in calculus and probability theory, and hopes to become an academic.



TOM GOULDING

Tom has a Mphil in Economics pending from Cambridge. He is one of our most highly rated tutors and has hundreds of hours of tutoring experience behind him. He has interned as an analyst at top firms, including Elixirr and Gleacher Shacklock.



CURRICULUM

Our curriculum is designed to be high impact. We aim to make the biggest possible improvement in exam performance, in the shortest possible time. To maximise results, we use a unique methodology that combines focused tuition with a data-driven approach.

SUBJECT TUITION

Whilst most revision courses feature 20 hours of subject tuition, we provide 30. This intensive tuition is delivered in small groups to provide a high degree of individual attention. Our tutors focus their lessons on individual examination units, with careful adherence to the specification. Lessons are geared towards exam technique, previous exam questions and subject material.

EXAM PRACTICE

Excellent subject knowledge does not necessarily translate into outstanding grades. To really excel, students need to demonstrate that knowledge in exams. We integrate regular exam practice into our curriculum, so that students can gain familiarity with questions and the exam environment. Detailed feedback on exam answers enables students to iron out weaknesses and maximise results.

STUDY SKILLS

We provide daily study skills sessions to equip students with the mindset, skill set and tool set necessary to optimise their revision time and unleash their academic potential:

- Time management, prioritising and deadlines
- Revision plans and notes
- Essay and exam techniques
- Concentration, breaks and stress management
- Memorisation techniques

SOCIAL ACTIVITIES

Exam season can be a pressurised time for students. In order to maximise their potential, it is essential that students have mechanisms for managing stress. Good rest makes for effective work. We provide daily social activities where students can unwind and make new friends, in an environment supervised by our staff.

- Quiz Nights
- Film Nights
- Karaoke
- Sports

TRIPS (OPTIONAL EXTRAS)

Residential students will have the opportunity to visit Cambridge University, do some sightseeing and meet professors to gain insight into UK university life and the application process. Activities will include punting along the river Cam and a candlelit dinner in a Cambridge hall.

ACCOMMODATION AND PASTORAL CARE

Accommodation is in twin rooms, some of which are en-suite. There are common rooms with TVs, books, washing/drying facilities, and WiFi.

The safety and security of students is our utmost priority. All our staff are enhanced DBS checked, and residential wardens will be on hand to ensure all safeguarding principles are strictly adhered to. If you would like a copy of our full safeguarding policy, please email info@fitzwilliamacademics.com.

Pastoral care is also a main focus; ensuring that the students' well-being is taken care of means that they will have an enjoyable and productive experience. Pastoral officers are on site for students to talk through any of their problems during the course. These issues will be referred internally or back to parents as appropriate.

Any other queries about pastoral care should be directed to the Course Organisers on 0121 285 6600.

DAILY SCHEDULE

Our schedule is an optimal combination of study time, exam practice, rest breaks, and social activities to ensure maximum academic progress. The work day has a focused 9am - 5.30pm format, which allows for 6 one-hour periods of study.

A typical day has the following format:

9am – 9.30am:	Registration and study skills
9.30am – 10.30am:	Lesson 1
10.30am – 11am:	Break
11am – 12pm:	Lesson 2
12pm – 1pm:	Lunch
1pm – 2pm:	Lesson 3
2pm – 3pm:	Lesson 4
3pm – 3.30pm:	Break
3.30pm – 4.30pm:	Lesson 5
4.30pm – 5.30pm:	Lesson 6
5.30pm – 7.30pm:	Dinner
7.30pm – 9.30pm:	Activities
10pm:	Curfew

This allows for 10 hours of lessons per subject per week, for a maximum of three subjects per week.





info@fitzwilliamacademics.com
0121 285 6600

Adcote School for Girls
Little Ness
Shrewsbury
Shropshire
SY4 2JY

Myddelton College
Peakes Lane
Denbigh
North Wales
LL16 3EN